

Did You Know...?

1. It is mandatory to recycle all of the items on this list.

Recycling bottles, cans, plastic containers, and mixed paper is mandatory for all residents and businesses in Chittenden County. All of these items can go in the same bin! To start All-In-One Recycling at your business, contact your hauler.

2. Haulers may not offer businesses "trash only" collection service.

Businesses that contract with a hauler for trash collection service will automatically be provided with recycling collection. Businesses that haul or ship their own recyclables may contact CSWD to obtain an exemption. The cost to dump trash at area transfer stations is about \$100/ton. There is NO cost to process recyclables at CSWD's recycling facility. While container rental and collection costs exist for both trash and recyclables, businesses that manage their wastes wisely and recycle can reduce their overall waste management costs.

3. Landlords may not offer tenants "trash only" collection service.

If trash collection is part of the rent you pay at your business, your landlord must also provide recycling collection service (see item #2).

4. Recycling containers provided by haulers must be clearly labeled and color coded.





CSWD offers free labels to help haulers meet this requirement. The labels are also available to local businesses at no charge.

5. The State of Vermont requires businesses to recycle color CRTs and fluorescent bulbs.

Cathode ray tubes (CRTs) are found in televisions and computer monitors. Each contains about 4-8 pounds of lead. Fluorescent bulbs contain mercury. Neither of these items may be discarded as trash. Contact CSWD for recycling opportunities.



Most packaging, containers, and paper are recyclable in Chittenden County...

-  **Glass bottles & jars**
 - Food and beverage containers only.
 - Rinse clean! Labels OK.
 - No dishes, windows, or ceramics.
-  **Aluminum/steel/tin cans & foil**
 - Rinse clean! Labels OK.
 - No full or partially full containers.
-  **Containers and packaging made from plastics #1 through #7**
 - Bottles, jugs, tubs, and molded product packaging (blisterpak).
 - Rinse clean!
 - No Styrofoam, filmy plastic (such as bags), or non-container/packaging items.
 - Follow the **Rule of 2:**
 - Min. size: **2 inches** on any **2** sides
 - Max. size: **2 feet** on any **1** side
-  **Paper**
 - White and colored paper, newspaper, catalogs, brochures, soft-cover books, window envelopes, etc.
 - Boxboard (dry-food boxes, paper egg cartons, beer/soda carriers, T.P. cores, etc.)
 - Corrugated cardboard and paper bags.
 - Must be clean, dry, and flattened.
 - Staples, tape, and labels OK.
 - Remove non-paper enclosures, etc.

...but some are NOT!

- NO Styrofoam** • **NO filmy plastic (bags)**
- NO toys** • **NO household items**
- NO wet or soiled paper** • **NO dishes**
- NO containers with contents**

Contact CSWD for information about:

- FREE blue bins, labels and signage
- FREE info about managing construction and hazardous waste
- FREE info on hassle-free composting programs
- Local Color paint

CSWD

CHITTENDEN
Solid Waste District

(802) 872-8111
www.cswd.net

Recycle these materials in your blue bin:

boxboard



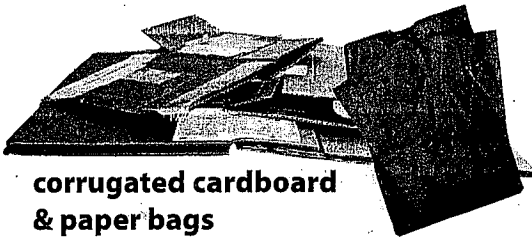
aluminum/steel/tin cans & foil



glass, food & beverage bottles & jars



corrugated cardboard & paper bags



plastic bottles, tubs & jugs



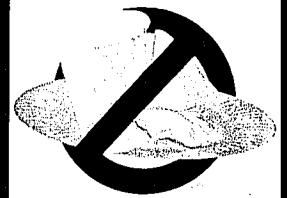
blisterpak



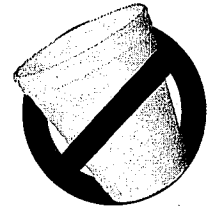
printing & writing paper, mail, catalogs, phone books, newspapers & magazines



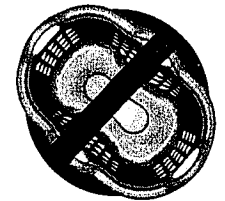
NO paper plates, cups or napkins



NO Styrofoam



NO household items or toys

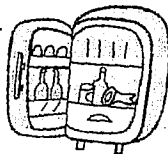


NO filmy plastic (bags)



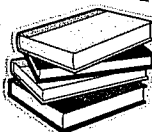
THINK OUTSIDE the blue bin! Recycle these materials at CSWD Drop-Off Centers:

Appliances major household, business & industrial



Ashes completely extinguished

Batteries auto, lithium, button, or NiCad



Books (hardcover)

Clothing & textiles clean, dry, clothing, linen, shoes, accessories; bagged



Electronics
Fluorescent light bulbs & tubes



Food waste kitchen scraps

Mercury-containing devices thermostats, thermometers, etc.



Propane cylinders 20-lb. and under

Scrap metal

Tires

Used oil and filters

Wood waste

Yard waste



NOTE: Request a brochure for information on limits and locations, or call our Hotline at 872-8111.



Repaint your properties with the best deal on paint at \$7 to \$9 per gallon! Local Color rebled paint is low VOC & made right here in Chittenden County!

Local Color is available at:
CSWD Environmental Depot (The safe place for hazardous waste!) 1011 Airport Pkwy. S. Burlington: 865-4663
ReCycle North Building Materials Ctr., 339 Pine St Burlington: 846-4015